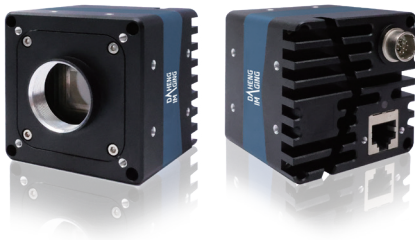


## MARS FAMILY

### MARS-2621-42GTM/C



- High speed and low power consumption
- 1.1" global shutter CMOS sensor
- Compatible with GenICam™ and GigE Vision®
- 10GigE interface
- 1 programmable GPIO
- 26.2 megapixels
- Fan optional

The MARS-2621-42GTM/C camera is a newest member of DAHENG IMAGING's MARS family high bandwidth industrial digital camera, featuring high resolution, high definition and low noise.

The MARS-2621-42GTM/C is a monochrome/color GigE Vision camera with the Gpixel GMAX0505 CMOS sensor. The MARS-2621-42GTM/C is capable of 10Gbit/s maximum transfer data rate, and has opto-isolated I/Os. Thanks to locking screw connectors, the MARS cameras can secure the reliability of cameras deployed in harsh environments. The MARS cameras are industrial digital cameras with high reliability and high price/performance ratio.

Compact, robust, outstanding performance, easy installation and use are especially suitable for machine vision applications such as industrial inspection, medical, scientific research, education, security and so on.

#### Features

- Programmable ROI, increased frame rate with partial scan
- Gain, exposure and white balance programmable (white balance only for color models)
- Support auto gain, auto exposure and auto white balance (auto white balance only for color models)
- Four acquisition controls: Single frame acquisition / Continuous acquisition / Software trigger acquisition / External trigger acquisition
- Trigger mode: Frame Start / Frame Burst Start
- Support Timer, Counter, LUTs and storable user sets
- Support Gamma, Sharpness, Flat Field Correction and Static Defect Pixel Correction
- Support Horizontal Binning, Decimation, Digital Shift, Reverse X/Y
- Support Black Level to adjust the brightness of images
- Color models support Light source preset, Color Transformation Control and Saturation
- Monochrome models support Noise Reduction
- Support Remove Parameter Limit to expand the range of exposure, gain, white balance, and so on
- Adjustable packet-size and packet-delay, and reserved bandwidth
- 16KB data storage area for saving algorithm coefficients and parameter configuration
- Compatible with GenICam™ and GigE Vision®, can be used in a wide range of 3rd-party software such as HALCON directly
- Optimized software package for 32/64bit Windows 10
- Multiple samples and easy-to-integrate SDKs for various programming tools
- Regulations: CE, RoHS, GenICam, GigE Vision

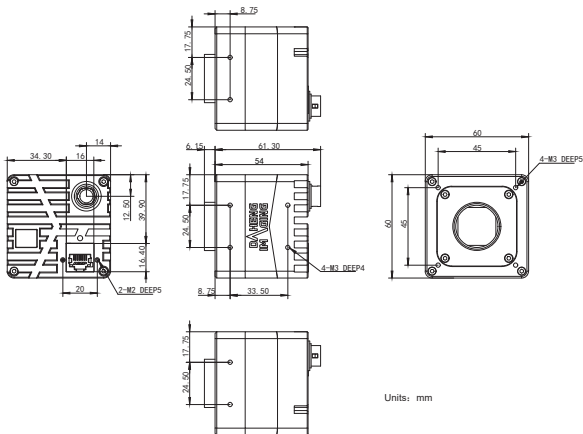
### Performance Specifications

Model	MARS-2621-42GTM/C
Interface	10GigE
Resolution	5120(H) × 5120(V)
Frame rate	41.8 fps
Sensor	1.1" global shutter Gpixel GMAX0505 CMOS
Pixel size	2.5 μm × 2.5 μm
Pixel Bit Depth	8bit, 12bit
Spectrum	Monochrome / Color
Exposure time	14μs~1s

### Mechanical Specifications

Weight	320g
Dimensions	60(W)×60(H)×54(L) mm, w/o connectors

### Technical Drawing



### Electrical Specifications

Power requirement	12V~24V DC via 12-Pin
I/Os	1 input / 1 output, 1 GPIO
Data interface	RJ45
Power consumption	<10W @24VDC

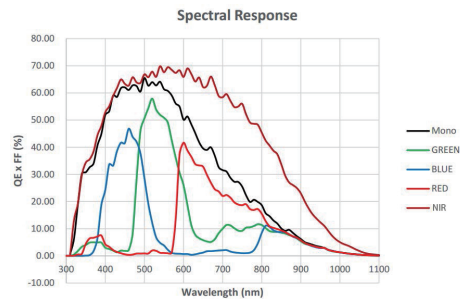
### Environmental Specifications

Operating temp.	0°C ~ +50°C
Storage temp.	-20°C ~ +70°C
Operating humidity	10% ~ 80%

### Optical Specifications

Lens mount	C-Mount
------------	---------

### Spectral Response



MARS-2621-42GTM/C

China Daheng Group, Inc. Beijing Image Vision Technology Branch

12F Daheng Science & Technology Tower, No.3 Suzhou Street, Haidian District,  
Beijing China, 100080

Tel: +86 10 82828878

E-mail: isales@daheng-imaging.com

For more information please visit : [www.daheng-imaging.com/en](http://www.daheng-imaging.com/en)

Specifications are subject to change without prior notice.

Copyright © 2023 China Daheng Group, Inc. Beijing Image Vision Technology Branch. All rights reserved.

41031017